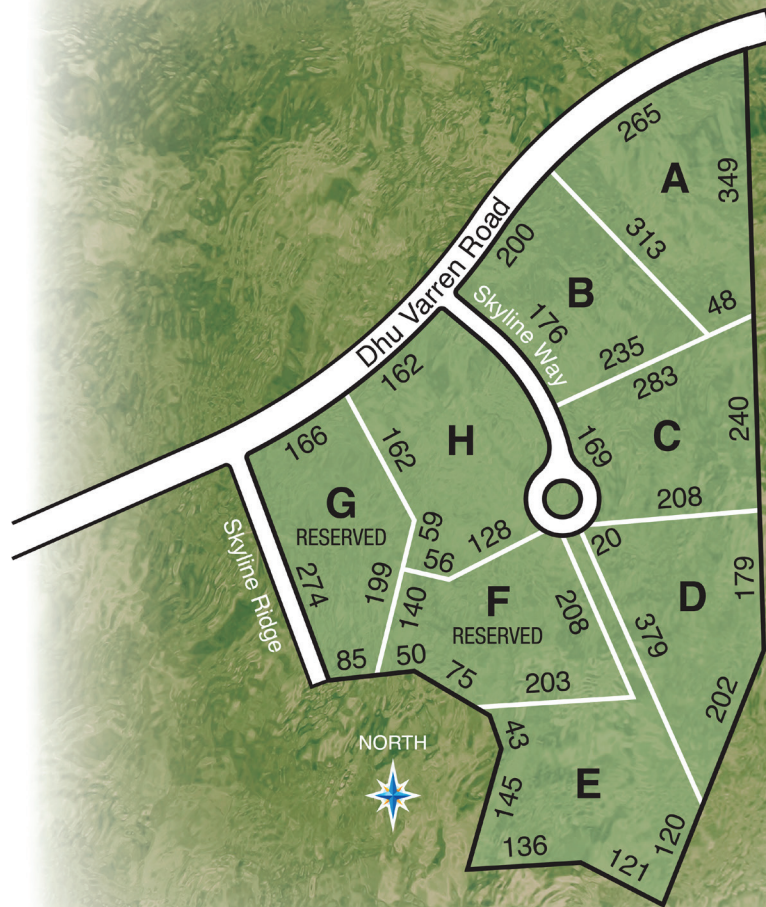


Woodland RIDGE

ANN ARBOR, MICHIGAN

Nestled in a country setting overlooking the Ann Arbor cityscape, Woodland Ridge is a peaceful wooded community of estate lots with the convenience of city living just a few miles away. Located just outside one of the country's most renowned cities, Woodland Ridge residents enjoy desirable Ann Arbor schools; easy accessibility to the University of Michigan and major hospitals; phenomenal shopping and dining in central Ann Arbor and nearby Barton Hills; and endless recreational opportunities within lush parks, golf courses, walking trails and the Huron River Valley.

Select the perfect homesite and begin designing your dream home with Cranbrook Custom Homes.



COMMUNITY LOCATION

Whitmore Lake and Dhu Varren roads,
west of the M-14 Expressway
Ann Arbor, Michigan 48302
Manager: Erik Morganroth
248-266-2795
info@cranbrookcustomhomes.com

SALES OFFICE

Montcaret Sales Office
19085 Chaumont Way
Northville, Michigan 48167
248-266-2795
Hours: Open Mon, Tues, Wed, Sat, Sun 11-5
Closed Thursday & Friday



CRANBROOKCUSTOMHOMES.COM
CRANBROOKARCHITECTURE.COM



082219