

THE GRANADA

4,428–4,864 Sq. Ft. | 4 Bedrooms | 3.5-4.5 Baths



FARMHOUSE MODERN



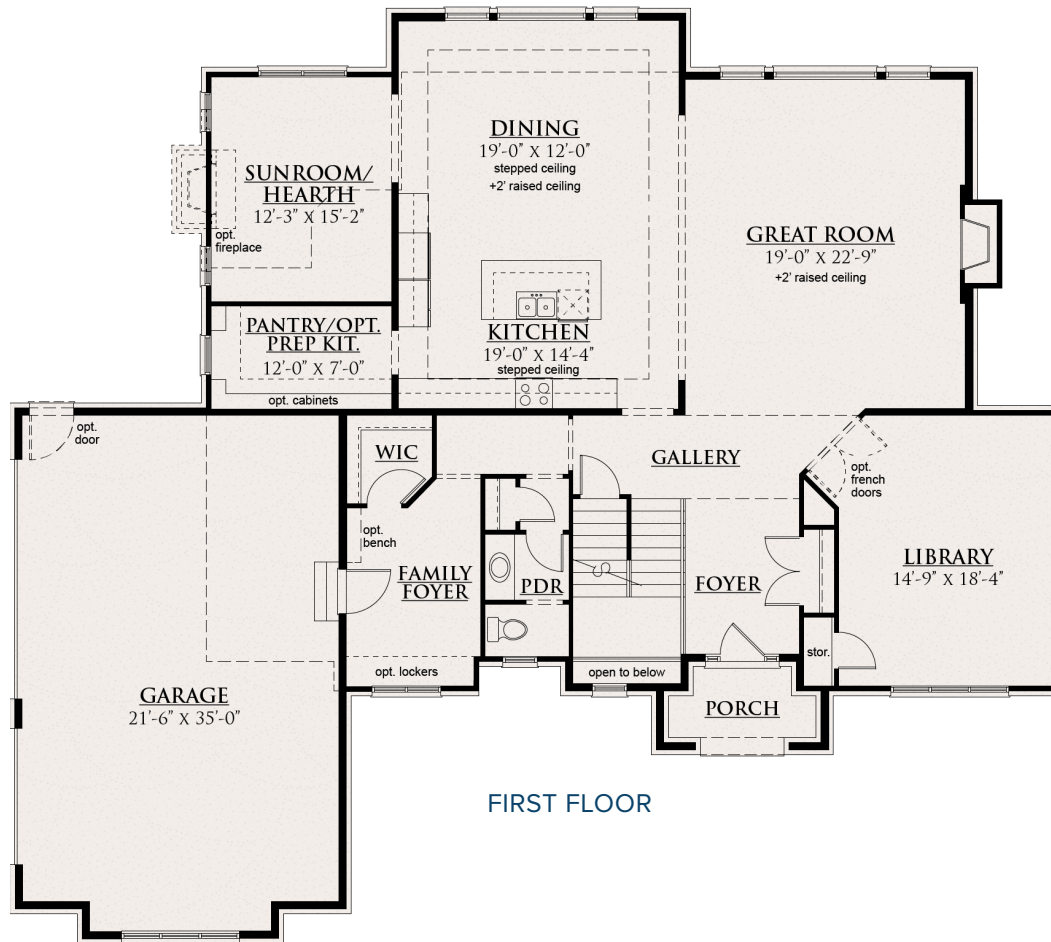
TUSCAN*



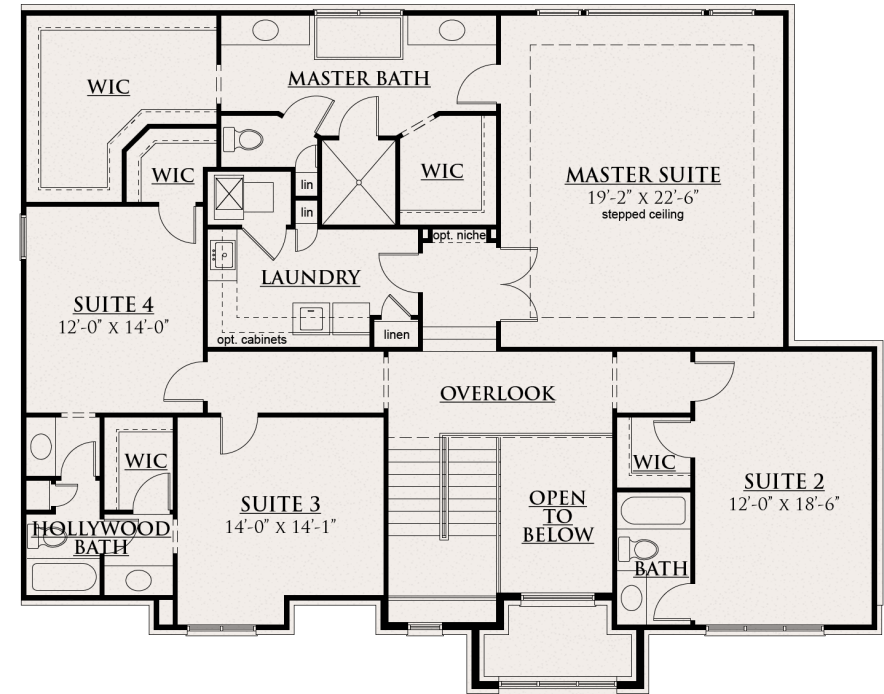
CONTEMPORARY

THE GRANADA

4,428–4,864 Sq. Ft. | 4 Bedrooms | 3.5–4.5 Baths



FIRST FLOOR



SECOND FLOOR

Revised 1/25/23 | 13001 23 Mile Road, Suite 200, Shelby Township, MI 48315 | info@CranbrookCustomHomes | CranbrookCustomHomes.com

This depiction represents an artist's conception of the elevation and floor plan and is not intended to be an exact representation or show specific detailing. Plans remain subject to change without notice. Drawings are not to scale. All measurements shown are approximate and not necessarily to scale. Location, size and construction of doors, windows, wall and any other items depicted may vary depending on elevation preference or choice of options and are subject to change without notice. Elevation finishes represented including, but not limited to, lighting, door style, and landscaping may depict upgraded styles that are not included in elevation pricing. Some options and elevations shown may not be available in every neighborhood; see Sales Manager for details. Due to normal construction tolerances, the room sizes shown may vary slightly. The Builder may change home design, materials, features and methods of construction without prior notice. Model homes may contain some optional features not available through the Builder.

